

# Conservation Horizons



Since 1948 \* 70 Years of Conservation, Education & Stewardship \*

MILLCENT NEILL DECKER...  
© 2011

## In this Issue

**Around the District - 3**  
**Our Cooperative Partners - 4, 5, 6**  
**Ag Resources - 7, 8**  
**E&S Control - 8**  
**Dirt, Gravel & Low Volume Roads -9, 10**  
**Education - 11**  
**Scholarships - 11**  
**Watersheds - 12**  
**Ag Land Preservation - 13**  
**Annual Tree/Seedling Sale - 14, 15**



Dirt, Gravel and Low Volume Roads Program- Keeping our waters clean for trout...and you! See page 9, 10

## 44<sup>th</sup> Annual Tree & Seedling Sale

please see pages 14, 15 for details

*Coupon for free bare-root seedling inside*



2018 NACD  
Stewardship Week  
Watersheds:  
Our Water, Our Home  
See page 11



## York County Conservation District

**Our purpose is to promote wise use and management of soil, water, air, plants, wildlife** and other natural resources through four program areas: Agricultural Resources, Education, Erosion & Sediment Control and Watersheds

We have served York County since 1938, when a group of 554 farmers from 18 townships signed a petition to form the York County Conservation District. This petition was approved by the state Soil Conservation Commission in 1948. Like all Conservation Districts, we are a legal subdivision of state government like townships or school districts. Our budget is supplied by county, state and federal programs, as well as foundation grants & fees for services. And we are managed by a board of environmentally aware York County citizen volunteers.

**We have traditionally assisted agricultural producers and other landowners** in protecting soils & reducing erosion in our waterways. Today, the District also works with non-agricultural landowners, developers and local government officials to protect our natural resources.

We do this by coupling technical & financial assistance with conservation planning and permitting requirements.

Education is a cornerstone of the District and we target a wide audience about effective pollution-prevention techniques to farmers, landowners, local officials, watershed associations, conservation organizations, civic groups, churches, schools, teachers and youth.

**Our Vision** - We are committed to the improvement & protection of our environment and the wise use of our County's diverse natural resources.

**Our Mission** - To achieve that vision we will be proactive providing conservation education, technical services and financial assistance, to enable the citizens of York County be good stewards of our natural resources.



### **Conservation District Staff**

Christina Dehoff	Office Manager
Robin Sharp	Administrative Assistant
Alexia Woodard	Receptionist / Program Assistant
Robert Fetter	E&S Resource Conservationist/ Network Administrator
Tiffany Crum	Engineer Technician II
Emily Neideigh	Engineer Technician I
Megan Anderson	Engineer Technician I
Mark Flaharty	Sr. Ag Resource Conservationist
Joe Rebert	Ag Resource Cons. Specialist I
Brita Runkle	Ag Resource Cons. Specialist I
Jim Myers	Ag Resources Conservationist
Michele Grove	Ag Resource Cons. Specialist I
Gary R Peacock	Watershed Specialist
Kim J Young	Education/Comm. Coordinator
Jennifer Risser	Assistant District Manager
Eric Jordan	Assistant Manager Program
Mark Kimmel	District Manager

### **Board of County Commissioners**

Susan Byrnes, Doug Hoke, Christopher Reilly

### **Board of Directors**

#### *Directors:*

Susan Byrnes - Commissioner  
Jeff Gossert - Chair  
Travis Sherman - Vice Chair  
Michael Flinchbaugh - Treasurer  
Gordon L Brown - Vice Treasurer

Jack Dehoff, James Rexroth,  
Kenyon Miller, Harry Bickel

#### *Associate Directors:*

Leroy Bupp, Randy R Craley, Bruce Holbrook,  
Jackie Kramer, Beth Lucabaugh,  
John Riedel, Rochelle Black,  
Dan Innerst, Dan Paulus

#### *Directors Emeritus:*

Rolla Lehman, Ellis Crowl, Keith Eisenhart

*Sponsor contact information and the advertisement of services in this newsletter is provided without any implied endorsement from the Conservation District staff or management*

**Conservation Horizons** is published 3 times each year & mailed to nearly 8,000 York County homes & businesses at no charge.

Editor/Publisher: Kim J Young Computer Technology: Robert Fetter Printer: Graphics Universal, Inc.

Please direct all inquiries to: York County Conservation District, 118 Pleasant Acres Rd, York, PA 17402

Phone: 717-840-7430 / Fax: 717-755-0301 / Email: yorkccd@yorkccd.org / Website: www.yorkccd.org





# Around the District

In December we celebrated **Director Pat Sueck** upon her well-deserved retirement. It was a joyous, but bittersweet recollection of her dedication and long-running service to conservation nationally, across the state and especially here in York County. Pat was first appointed to the Board in 1990, when our budget was small and we had a staff of seven. Since then we have grown considerably, and Pat has seen approximately 41 different former employees during the 28 years of her tenure.

Pat has been an active board member involved in numerous District efforts including Chesapeake Bay issues, NPDES Permitting, Watershed Specialist efforts, and perhaps her favorite focus: environmental education.

In 1998 she was elected as the Pennsylvania Association of Conservation Districts (PACD) President and served for two years. She also served as the PACD representative for the National Association of Conservation Districts (NACD) providing a Pennsylvania voice and vote at their national meetings. Pat has also served on the PACD's Executive Board where she continued to promote conservation while attending NACD Annual & Regional Conventions and repeatedly going to Washington, D.C. to keep our legislators on their toes, and informed on important issues.

Over the years she has attended countless county, state & national Envirothon events. She has also chaired the NE NACD Education Committee, served as Northeastern NACD President and was a member of the National Conservation Foundation (NCF). Now the home of the NCF Envirothon, which has recently been upgraded to an international event.

Pat has served on almost every committee the District has formed and acted as an important liaison between the board and members of the Pennsylvania Farmers Bureau & The Farmers Forum. Not surprising, her awards for service are numerous. She has received the Conservation District's Special Service Award, the NACD President's Award and the PACD Distinguished Service Award.

At her retirement Representative Stan Saylor presented Pat with a Citation from the House of Representatives stating she has, *"Demonstrated remarkable knowledge, ability and integrity, in carrying out her many responsibilities, thus earning the respect and gratitude of all those who received the benefit of her tireless devotion to duty."*

Pat has rarely missed our 12 meetings a year for nearly 30 years, despite her long drive from Airville in all kinds of weather. To say she will be missed is an understatement. So we will just thank her and wish her the best of luck on this new chapter of her life - in a new home near family in Littlestown. Thank you Pat for your outstanding career as a citizen conservationist. We look forward to your visits.



Chairman Jeff Gossert with Pat Sueck



Representative Stan Saylor with Pat Sueck

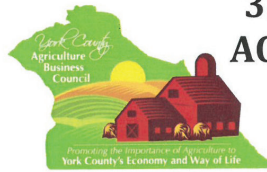


Follow us & like us  
on Facebook

The York County Government is an Equal Opportunity Employer and shall in no way discriminate against employees or applicants for employment on account of age, religion, color, national origin, sex, ancestry, disability, and/or any political or union affiliation.

The public is invited to the **York County Ag Business Recognition Banquet** on March 29th at the York Expo Center. Banquet sponsorships are available.

For more details and to purchase tickets, please contact Gabrielle Wentworth at 717-887-6465 or ycagbizc@gmail.com. Reservations are due on Friday, March 2nd.



## 32nd ANNUAL YORK COUNTY AGRICULTURAL RECOGNITION BANQUET

**THURSDAY, MARCH 29<sup>th</sup>, 2018**

York Expo Center, Old Main Hall, York, PA (Free parking)

Social - 5:30 p.m. Dinner - 6:30 p.m. Program - 7:30 p.m.  
Hosted by the York County Agriculture Business Council

Platinum Sponsors: **Stock and Leader**  
ATTORNEYS AT LAW  
When Decisions Matter

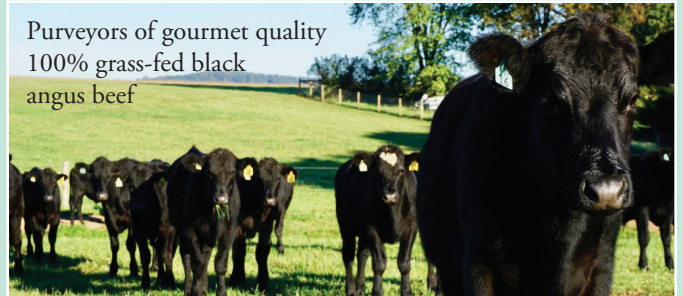
**Glatfelter**  
Insurance  
Group



The 2017 Atlantic Champions York Revolution will be hosting **AG & FARM NIGHT** on Saturday, June 23rd. Presented by BB&T Bank, there will be a post-game fireworks sponsored by Allied Milk Producers. Pre-game and between inning activities are planned. Portions of ticket sales benefit the York County Agriculture Business Council.



Purveyors of gourmet quality  
100% grass-fed black  
angus beef



**From Our Farm to  
Your Family**

**ALL NEW!**

**MILLER  
PLANT FARM**



**717-741-2631**

430 Indian Rock Dam Road, York, PA 17403

[www.MillerPlantFarm.com](http://www.MillerPlantFarm.com)



Their  
2018 CSA Membership  
is  
**NOW OPEN**





## A Tasty Destination!

Follow the farm:



FlinchbaughsOrchard.com | 717-252-2540

110 Ducktown Rd. just outside of Hellam

**Farm Market Spring Hours**  
Mon-Fri 9am-6pm Sat 9am-4pm  
Closed Sunday

**Upcoming Event**  
Touch a Tractor Day  
Saturday, June 16 | 10am-3pm



# res

Resource  
Environmental  
Solutions

**A delicious destination for over 65 years!**

**BROWN'S**  
Orchards & Farm Market

8892 Susquehanna Trail South  
Loganville • 717-428-2036  
**brownsorchards.com**

Our native nursery is home to approximately 95,000 plants

Native trees & shrubs  
Perennial ground cover  
Various wetland plants  
Wildlife habitat plantings

Our well-established native plant nursery features greenhouse and outdoor production plus contract growing

We also collect and propagate seeds of various trees and shrubs

**Specializing in the restoration of all types of aquatic resource projects**

**Problem Assessment**  
**Design • Permitting**  
**Construction & Consulting**  
**Management**  
**Project Maintenance**  
**Project Monitoring**  
**Native Riparian**  
**Nursery & Planting**



**Office**  
2433 Seven Valleys Rd #202  
Seven Valleys, PA  
(717) 428-9368  
leei@arrc1.com

**Native Nursery**  
15073 Bonnair Rd  
Glen Rock, PA  
(717) 227-5436  
arrcnursery@arrc1.com

**www.arrc1.com**

Proud Sponsor of  
**YORK COUNTY  
CONSERVATION DISTRICT**



### DID YOU KNOW? PA's 5 Nuclear Plants:

- Supply nearly 40% of the state's electricity
- Add nearly \$2 Billion to the state's economy
- Account for nearly 16,000 in-state, full time jobs
- Generate \$400 Million in annual tax revenue

**KEEP PENNSYLVANIA STRONG - SUPPORT NUCLEAR**

## PLACE YOUR AD HERE!

Contact us for rates

Our newsletters are mailed to  
8,000 homes & businesses  
3X a year

717-840-7190 or kyoung@yorkccd.org

# HRG

**Herbert, Rowland & Grubic, Inc.**  
**Engineering & Related Services**

**AN EMPLOYEE-OWNED COMPANY**



# CONEWAGO

**ENTERPRISES, INC.**  
**DESIGN-BUILD GENERAL CONTRACTOR**



**PENNSYLVANIA ASSOCIATION OF  
CONSERVATION DISTRICTS, INC.**



**Horn Farm**  
*Center for  
Agricultural Education*

In 2018 **The Horn Farm** is offering both Vegetable & Produce Community-Supported-Agriculture Programs (CSAs) for community residents. Twenty-two weeks of organically growth, fresh-cut weekly flower bouquets and/or 23 weeks of fresh, organically-grown produce. Shares are still available. Check it out - along with all of their classes, garden rentals and programs - at [www.hornfarmcenter.org](http://www.hornfarmcenter.org)

## Weaber Lumber

*Purchasers of Standing Timber Through Sustainable Forestry*

**Shawn M. McCanna**  
*Forester*

[smccanna@weaberlumber.com](mailto:smccanna@weaberlumber.com)

1231 Mt. Wilson Road, Lebanon, PA 17042  
toll free: 800 745-9663 cell: 717 507-6903 fax: 717 867-4904



**J.L. GOSSERT & CO FORESTRY**  
**WOODLAND RESOURCE MANAGEMENT**  
**TIMBER MARKETING SERVICES**

Jeffrey L. Gossert, ACF, CF, RPF

717.870.0658

[www.gossertforestry.com](http://www.gossertforestry.com)

Working for woodland owners in PA & MD since 1982

*Timber is a Crop...Manage & Harvest Wisely!*





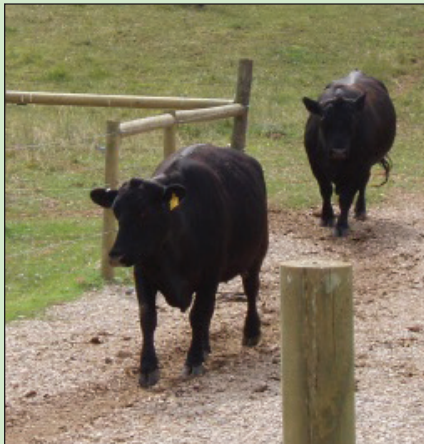
## Ag Resources by Michele Grove

### NEW STANDARD ANIMAL WEIGHTS COULD AFFECT YOUR ANIMAL OPERATION REQUIREMENTS

All animal operations (AOs) must have a plan for handling manure produced by their animals. The type of plan required is dependent on the total animal weight, animal numbers and the animal density of the operation. It is important for animal operations to understand their animal concentration status and requirements.

The easiest way to determine your status is to use standard animal weights in the Animal Equivalent Units (AEUs) calculation. An AEU is 1,000 pounds of live animal weight of any animal on an annualized basis. Annualized means if animals are not present on an operation for a whole year, the animal units are adjusted.

Pennsylvania's standard animal weights were recently updated in October 2017. This update has increased some weights and added some animal type sub-categories, which means your operation might now be a Concentrated Animal Operation (CAO). So, the "Time is Now" to re-check your animal concentration status! Our District Ag staff is available to assist you with the calculation and determining your requirements.



The "Time Is Now"  
to re-check your  
Animal  
Concentration  
Status!

Conservation District  
Ag staff are available  
to assist you.



In simple terms, if an animal operation has 2 AEUs per acre of land suitable for application of manure, it is likely a "Concentrated Animal Operation" (CAO). There are some other criteria, but this is the basic starting point. This includes all livestock, including nonproduction animals such as horses used for recreation and transportation. Land suitable for manure application includes cropland, hay land, or pastureland (owned or rented) under the management control of the operator.

Penn State Extension's "Agronomy Facts 54 - Pennsylvania's Nutrient Management Act (Act 38): Who Is Affected," provides complete details; as well as the updated standard animal weights. It is available online at <https://extension.psu.edu/pennsylvanias-nutrient-management-act-act-38-who-is-affected>.

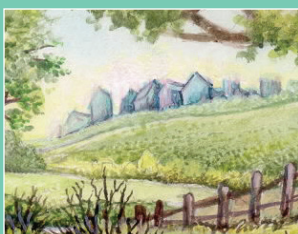
If determined to be a CAO, an Act 38 Nutrient Management Plan (NMP) will be required. These plans need to be developed by a Nutrient Management Specialist and submitted to the Conservation District for review and approval.

*Continued, New Standard Animal Weights* - Another status requiring a NMP is a Concentrated Animal Feeding Operation (CAFO). This is a federal designation based on large animal number thresholds and more than 300 AEUs when all animal types are combined. The updated standard animal weights could push an AO into this concentration status. In PA, the Department of Environmental Protection regulates these farms and their permits, but the required NMPs are reviewed and approved by the Conservation District.

It is important to note that if your operation is not a CAO or CAFO, you are required to have a Manure Management Plan (MMP) under PA State Law Chapter 91. A Manure Management Manual is available to assist farmers in writing their own MMP. The manual consists of three sections: Instructions; the Plan - Workbook & Record-keeping; and Manure Application Rate Tables. This plan is required to be available on the farm and does not need to be submitted, unless requested during an inspection. To obtain a copy of the manual, contact our York County Conservation District Ag Department or access it online at: <https://extension.psu.edu/programs/nutrient-management/manure/plan-writing/land-application-of-manure-manure-management-plan-guidance>.

## AGRICULTURAL PLANNING REIMBURSEMENT PROGRAM

The Agricultural Planning Reimbursement Program is open to all agricultural operators/landowners in Pennsylvania's Chesapeake Bay watershed. Through this program, participants can be reimbursed for fees paid to consultants to create Manure Management Plans, Nutrient Management Plans, Agricultural Erosion and Sediment Control Plans, and Conservation Plans developed after January 1, 2017. Plans developed by NRCS, using NRCS funding, or for Resource Enhancement and Protection (REAP) tax credit, are not eligible for assistance under this program. The landowner/operator can be reimbursed the actual cost up to \$500 for ≤ 50 acres, + \$10 for each additional acre > 50, maximum not to exceed \$1,500 per plan. Reimbursement funds are allocated based on impact to the Chesapeake Bay and are available on a first-come, first-served basis. Landowners/operators must first register for the program. Please note that the registration deadline for this program is April 1, 2018. Plans must be completed and submitted by May 30, 2018 with a reimbursement request form. Reimbursements will be allocated after the plan(s) has been submitted and approved by the coordinator. In our area, the coordinator is Jedd Moncavage, TeamAg Inc. For more information, contact Jedd at 717-721-6795 or [jeddm@teamaginc.com](mailto:jeddm@teamaginc.com).



## Erosion & Sediment Control

E&S Program Accomplishments for October 2017 - January 2018

<b>Preconstruction meetings</b>	<b>13</b>	<b>General NPDES Issued</b>	<b>31</b>
<b>New Plan Reviews</b>	<b>81</b>	<b>Complaints Investigated</b>	<b>38</b>
<b>Revised Plan Reviews</b>	<b>31</b>	<b>Total site inspections</b>	<b>130</b>
<b>Total Project Acres</b>	<b>2,637</b>	<b>Sites in compliance</b>	<b>53</b>
<b>Total Disturbed Acres</b>	<b>834</b>		





## **Dirt, Gravel, and Low Volume Roads Program,** *by Rob Fetter and Gary Peacock*

In Pennsylvania, non-point source pollution is responsible for 88% of all impaired streams. The dust and sediment pollution resulting from the more than 27,000 miles of dirt and gravel roads in the Commonwealth has been shown to be a large contributor to this pollution. For many years, concern has increased regarding soil erosion and runoff generated from dirt and gravel roads. **The Pennsylvania Chapter of Trout Unlimited (TU) first brought the problem of unpaved road runoff into the spotlight in 1991.** Unpaved roads not only generate sediment, but also act as collectors for runoff and sediment from adjacent land uses. Traditional practice in road maintenance has been to convey water along roads and deposit it into streams by the quickest means possible. This practice results in increased flood flows in streams and transports sediment and a host of other pollutants into local waterways. A task force comprised of sportsmen and women, environmental resource agencies, local government representatives, private companies, citizen environmental groups, Penn State researchers, and legislative staff was assembled to further investigate the problem of unpaved road runoff.

From that investigation, a locally-based, locally-controlled, cooperative approach to eliminate non-point source pollution occurring from rural roadways was recommended. Long-story-short, in 1997 legislation was passed and amended in 2013 creating the Dirt, Gravel and Low Volume program to provide money from the motor license fund, through conservation districts to municipalities to employ “Environmentally Sensitive” maintenance of dirt and gravel roads. Environmentally Sensitive Maintenance Principles include:

- Avoid concentrating drainage where possible.
- Minimize flow volumes.
- Reduce effects of concentrated drainage.
- Reduce surface erosion.
- Reduce cost and frequency of road maintenance.



The Dirt, Gravel and Low Volume Roads Program (DGLVR) is split into Dirt & Gravel Roads (any road that has a stone, dirt, or gravel surface) and Low Volume Roads (any paved or sealed surface that has less than 500 cars per day). York County has approximately 200 miles of Dirt & Gravel roads and > 2,000 miles of Low Volume roads. Since the creation of the program, the York County Conservation District (YCCD) has funded the improvement of 54 Dirt, Gravel and Low Volume Road sites (37 miles) in various municipalities in the County, totaling over \$3 million spent on local roads. One municipality reported road maintenance savings of over 1.2 million dollars over a 5 year period implementing Environmentally Sensitive Maintenance Principles. Conservation Districts statewide completed 4,291 Dirt, Gravel and Low Volume Roads projects worth over \$134 million. The goal of this program is to create more environmentally and economically sustainable road networks in the state of Pennsylvania through environmentally sensitive road maintenance.

In 2016, Jacobus Borough applied to YCCD for a \$100,240 Low Volume Road grant including in-kind amount of \$13,070 to help with improving E. Meadow Street – work was completed in 2017.

### Problems:

- Road surface has severe traverse & fatigue cracking
- Road shape is flat with rutting occurring channeling runoff down road.
- Stormwater runoff coming down the road has caused severe erosion in ditch at end of the road. The ditch outlets directly to stream that drains to Lake Redman - Our Public Water Supply.



*Photo - looking down lower section of road*

*Dirt, Gravel and Low Volume Roads Program, cont.*



*Above Photos: Eroded ditch at end of road that outlets to stream (left); Looking down out-sloped road (center); Roadside ditch stabilized with rip-rap.*

**Solutions:**

1. Road surface drainage
  - Full Depth Reclamation of the road to improve road base.
  - Out-slope the road to sheet flow runoff off of road into existing vegetative area.
  - Obtain easement to install swale and stilling pool to collect runoff coming off of farm fields and upper section of road.
2. Roadside ditches
  - Regrade eroded ditch at end of the road and install rip-rap stabilization.

Fake Road Phase II in Chanceford Township was funded by the York County Conservation District and received Grant for \$50,301.00 in 2015 including in-kind amount of \$44,350. The project was completed in 2016. An undersized, damaged and failing 60 inch culvert pipe was replaced by a 13.6' x 4.7' bottomless arch culvert spanning bankfull and realigned with the stream.

*Photo top right: Downstream end of existing 60" culvert.*



*Photo bottom right: Downstream 13.6' x 4.7' bottomless arch culvert.*



For more information about the program  
Contact Gary Peacock or Robert Fetter,  
York County Conservation District  
717-840-7430 or website - [www.yorkccd.org](http://www.yorkccd.org).  
You can also visit The Penn State Center for  
Dirt, Gravel, and Low Volume Roads Studies  
website  
at <http://www.dirtandgravel.psu.edu/index.html>.

**Environmentally-Sensitive Road  
Maintenance saved one  
York County Municipality  
\$1.2 million over five years.  
Several of these roads required no  
maintenance for seven years or more.**





## Education & Communication

Meet our 2017 - 2018 YCCD College Scholarship Recipients

A graduate of Kennard-Dale High School, **Sean Laurer** (*at right with a black bear he was measuring and taking blood samples for the Pennsylvania Game Commission*) is currently attending Penn State Dubois where he is working towards a degree in Wildlife & Fisheries Science. His goal is to become a big-game biologist. This life-long interest was stoked when he first joined the Stewartstown Elementary Envirothon team and studied the careers of Gifford Pinchot, Izaak Walton and Rachel Carson in that year's study resources.

In addition to Sean's scholarly achievements, he is most proud so far of his work as an intern with the Game Commission. In addition to his experiences with black bear, Sean was part of a team of northern fawn capture crews, radio-collaring the deer to help determine survival rates in the region of Coudersport.

Sean is excited about his future. As he puts it, "I chose this field of study because I feel it's important to conserve our natural resources for our future generation. With a career in wildlife ecology I hope to ensure that my children and grandchildren will be able to enjoy the outdoors even more than I do. We must carefully manage our outdoor resources now so that they are here for the future."

Our second College Scholarship recipient is **Nicole Guise** (*at right with her calf*). Nicole is a graduate of Spring Grove High School currently enrolled at Penn State University's Schreyer Honor College where she plans to major in Agricultural Sciences and Extension Education (AEE) with environmental and conservation concentrations.

Last year, as the York County Dairy Princess, Nicole discovered her passion - educating the public, specifically children, about the importance of agriculture & natural resource preservation. Her goal is to continue educating and advocating for this industry.

A third generation dairy farmer, Nicole is proud that her family's farm, Buttonwood Farms, has been placed into land preservation. Also a former Envirothon student, Nicole is the President of the Penn State York AgSci Club and a member of the Graham Center for Entrepreneurial Leadership. She was a York County 4-H member for eight years and a PA delegate to National Student Ag Day in Washington, D.C.

Nicole says, "For me, conservation is about fostering a passion, interest, and enthusiasm for agriculture, and preserving it, among my peers, family, and community. By bringing more awareness to conservation efforts, we can get more people involved and expand our efforts."

**Check out our website later this spring for details on our 2018-2019 College Scholarships.**



The 2018 National Association of Conservation District's (NACD) Stewardship Week theme is **Watersheds.**

For more information on their educational materials check out <http://www.nacdnet.org/general-resources/stewardship-program/>



# Watershed Specialist

Gary Peacock

## SRBC's Grandfathered Water Uses Registration Program

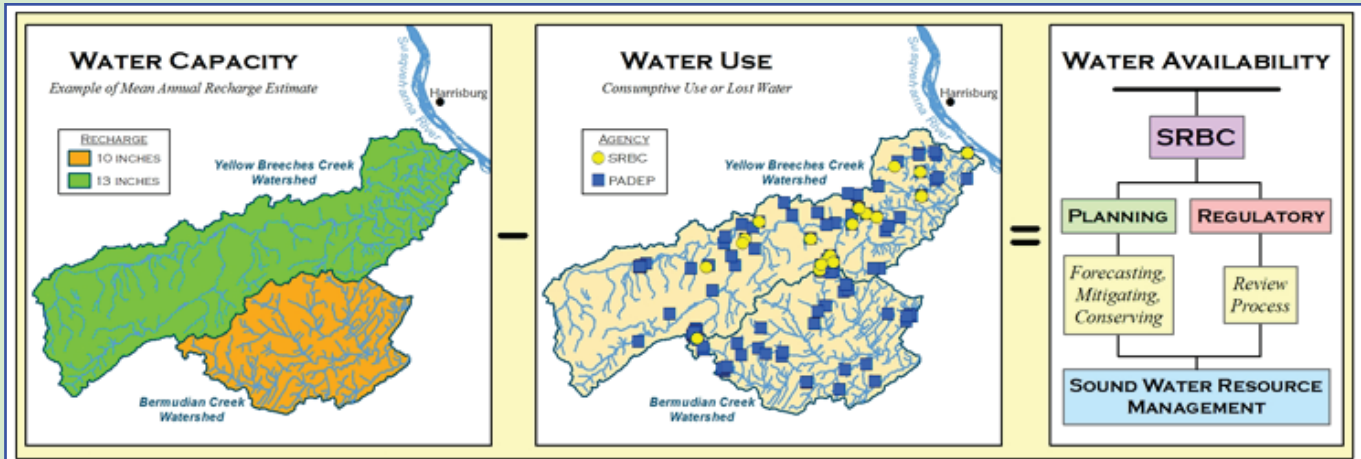
The Susquehanna River Basin Commission (*photo credits below*) announced its new program to register older, unpermitted water withdrawals and consumptive water uses in the Basin.

Recently, a study compiled all available data to characterize Basin-wide water use and availability. The Commission that created that study - which can be found at: <http://www.srbc.net/planning/cwuas.htm> - estimated that there are possibly more than 700 facilities exempt from regulatory oversight with an estimated water use of nearly one billion gallons per day. If accurate, this volume of water use is roughly equal to the total amount currently accounted for, and managed, by the Commission across the entire Basin.

With such large quantities in question, the Commission decided to develop a program that would close this significant knowledge gap regarding older, unpermitted water use to ensure the Commission's ability to effectively manage the water resources of the Basin.

Under this new program, facility managers must register their grandfathered withdrawals and consumptive water uses by December 31, 2019, to preserve the facility's exemption from any permit approval in the future.

The Commission is incentivizing early registration by offering a free registration period from January 1 through June 30, 2018, after which a \$500 registration fee (July 1 through December 31, 2018) or \$1,000 registration fee (all of 2019) will apply. Additional information is available at our website [www.srbc.net/grandfathering-registration](http://www.srbc.net/grandfathering-registration).



**Shane Dehoff Construction, LLC**

**Kitchens • Bath • Flooring**

**Additions • Remodeling • New**

**717-244-7534 • Windsor, PA**



**framers' workshop**

Quality Custom Picture Framing

**WE FRAME ANYTHING**

Prints to Posters - Needlework to Nostalgia

259 B Pauline Drive  
South York Plaza  
York, PA 17402  
(717) 741-9000  
Fax (717) 741-0808

ED WISE, CPF  
Manager

**Business Hours**  
M, W, F 10-6  
T, Th 10-8  
Sat. 10-5

**Take this coupon to the Framers' Workshop and receive 20% off your purchase.**



# The York County Ag Preservation Program

Patty McCandless, Program Director

118 Pleasant Acres Road, Suite F

York PA 17402

717-840-7400 / Monday-Friday 8:00 am to 4:30 pm

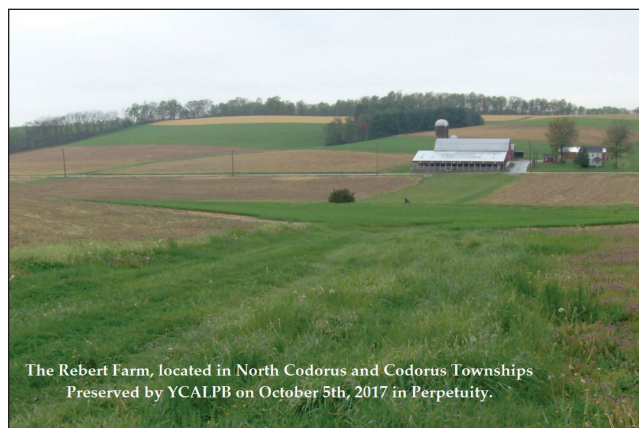


The York County Commissioners have allocated \$284,707 for Agricultural Conservation Easement Purchases in 2018. By February, we will know our state match as well as our total easement purchase funds for 2018. If you applied for preservation in 2017, you should have received an application update form in the mail. It's a benefit to return the application update form each and every year, ensuring that your farm has a chance of being selected for preservation. Those farmers that apply every year will need to fill out a crop report and their gross farm income figures for 2017. If you haven't applied in the past year, you will need to fill out a new application, with the past three years of gross farm income. We do not charge an application fee, meaning that applying for our program is free. As a reminder, easement applications can be changed, but must be finalized prior to ranking and selection for preservation. We encourage you to sit down with YCALPB staff, to review your easement application and mapping boundaries prior to ranking to ensure an accurate application is submitted. Many of our easement applications do exclude certain parts of the farm, such as woodlands, poor soils, and homesteads. Each application is different and reflects each farmer's preferences.

Once we have received your application for 2018, staff will begin to schedule conservation evaluation visits with you. During these farm visits, we will compare your farming operation with the operation described in your conservation plan. If your farm generates or spreads manure, you will also be required to have a manure management plan or nutrient management plan, as per state law.

## Some common issues that we find with conservation plans:

- Plan not written for current operator
- Plan does not address all lands in commercial ag production
- Land uses have changed since the plan was written (i.e. crop land is now pasture)
- Plan does not address resource concerns
- Plan is not implemented (Less than 50% of practices are present on the farm)



The Rebert Farm, located in North Codorus and Codorus Townships  
Preserved by YCALPB on October 5th, 2017 in Perpetuity.

Keep in mind that we no longer have deadlines for easement applications. We will accept applications year round. However, the YCALPB can begin selecting farms for preservation as early as February. Once the easement purchase funds are exhausted, no more farms will be selected for that funding year. Therefore we urge you to return your application for easement purchase as early as possible, to ensure we have time to qualify, visit, and rank your farm.

In order to qualify for land preservation, a farm must be enrolled in an Agricultural Security Area, it must be comprised of 50% lands in Soil Classes I – IV which are used for commercial agricultural production. A farm must also generate an average of \$10,000 of gross farm income for three years, and finally have a current conservation plan that is at least 50% implemented. The easement purchase program also has a 50 acre minimum or 10 acre minimum if the applying property lies adjacent to a previously preserved farm.

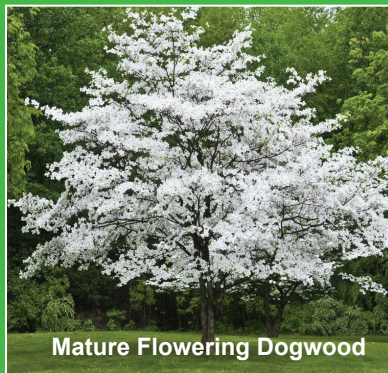
Landowners interested in preserving their farmland may contact the agency at (717) 840-7400 or [www.YorkCountyPA.gov](http://www.YorkCountyPA.gov). Useful Links and a Preservation Map now show all preserved farms within the county. See if any preserved farms are near you. Funding for land preservation efforts comes from sources such as; Clean & Green penalties, York General Fund, Marcellus Shale funds, Growing Greener funds, and state and federal sources. York County Ag Land Preservation Office hours are 8 AM to 4:30 PM Monday through Friday. We are located in the County Annex Building at 118 Pleasant Acres Road York PA 17402.

Did you know that the presence of trees has been documented to improve the quality of our lives? Trees clean our air and beautify our communities. They reduce soil erosion and enhance the water quality of our local waterways. Trees reduce heating and cooling costs, and improve human health.

For over 40 years, the York County Conservation District has hosted an annual tree seedling sale. Each year, the Conservation District sells over 20,000 seedlings that are planted throughout York County. The varieties available at the spring 2018 sale include native tree seedlings as well as fruit-bearing trees and shrubs.



Bundles of ordered seedlings



Mature Flowering Dogwood

Go to <http://www.yorkccd.org//TreeSale> to see the complete order form and the description of each plant being offered. Orders will be accepted now through March 22nd. Return completed order form, including a check payable to YCCD or your credit card information, to York County Conservation District 118 Pleasant Acres Road York, PA 17402. Orders will be available for pickup at Rocky Ridge County Park between 10 AM and 6 PM on Thursday, April 12th. Proceeds from the sale are used for the Conservation District's education programs including the annual Envirothon county-wide school event.

**Pick up date: Thursday, April 12 Rocky Ridge Park -10:00 - 6:00 pm**

*Please note: seedlings are not mature shrubs & trees as seen in photos*

Anyone is welcome to stop by Rocky Ridge Park on April 12 with the coupon below to pick up one **FREE bare-root white pine or blue spruce seedling** (while supplies last). Please bring this coupon with you. You may also purchase leftover plants from the District Sale as long as the supply lasts.

## **2018 York County Conservation District Annual Seedling Sale**

YCCD  
118 Pleasant  
Acres  
York PA 17402  
717.840.7430

**Stop by Rocky Ridge County Park  
10:00 am-6 pm Thursday April 12th 2018  
to receive a free White Pine or Blue Spruce  
bare root seedling based on availability.**

Check out our  
website for  
complete listing of  
seedlings available  
[www.yorkccd.org](http://www.yorkccd.org)

**Coupon redeemable for one FREE bare root seedling  
Limit one per customer while supplies last**







**Conservation Horizons**  
**York County**  
**Conservation District**  
**118 Pleasant Acres Road**  
**York PA 17402**

Cover art, an original egg tempera by Millicent Neill Decker

---

**Non-Profit Org.**  
**U.S. Postage**  
**PAID**  
**Permit No. 476**  
**York, PA**

---

*“When the well is dry,  
 we learn the worth of water.”*

*- Benjamin Franklin*

**Would you like to be on our mailing list?** Our newsletter *Conservation Horizons* is **published 3 times each year free** to over 8,000 York County homes & businesses. To be put on our mailing list call or email: 717-840-7430 or [yccd@yorkccd.org](mailto:yccd@yorkccd.org).

**If you would rather “Go Green”** and save paper, send us an email request and put “Electronic Newsletter” in subject line and ask to receive your newsletter by email.

Or contact us with address changes or to be dropped from our mailing list. Thank you.

### YCCD District Calendar

#### **March 2017**

March 2	Manure Mgmt Workshop, York Annex
March 9	YCCD Board Meeting – 11:00 am Annex
March 16	Capital RC&D
March 22	Seedling Sale Order Deadline
March 22	DGR/LVR QAB Meeting, Annex
Mar 30	Good Friday Holiday – Office Closed

#### **April 2017**

April 5	YCCD Board Meeting – 7:00 pm Annex
April 12	Seedling Sale Distribution at Rocky Ridge Park
Apr 24	Sr. high School Envirothon at Rudy Park

#### **May 2017**

May 1	Middle School Envirothon, Rudy Park
May 2	5th – 6th grade Envirothon, Rudy Park
May 8	3rd – 4th grade Envirothon, Rudy Park
May 10	YCCD Board Mg, Annex Rm 1, 7:00 pm
May 22-23	PA Envirothon, Susquehanna University
May 28	Memorial Day – Office Closed

#### **June 2017**

June 14	YCCD Board Mtg, Room 1, 7:00 pm Annex
---------	---------------------------------------