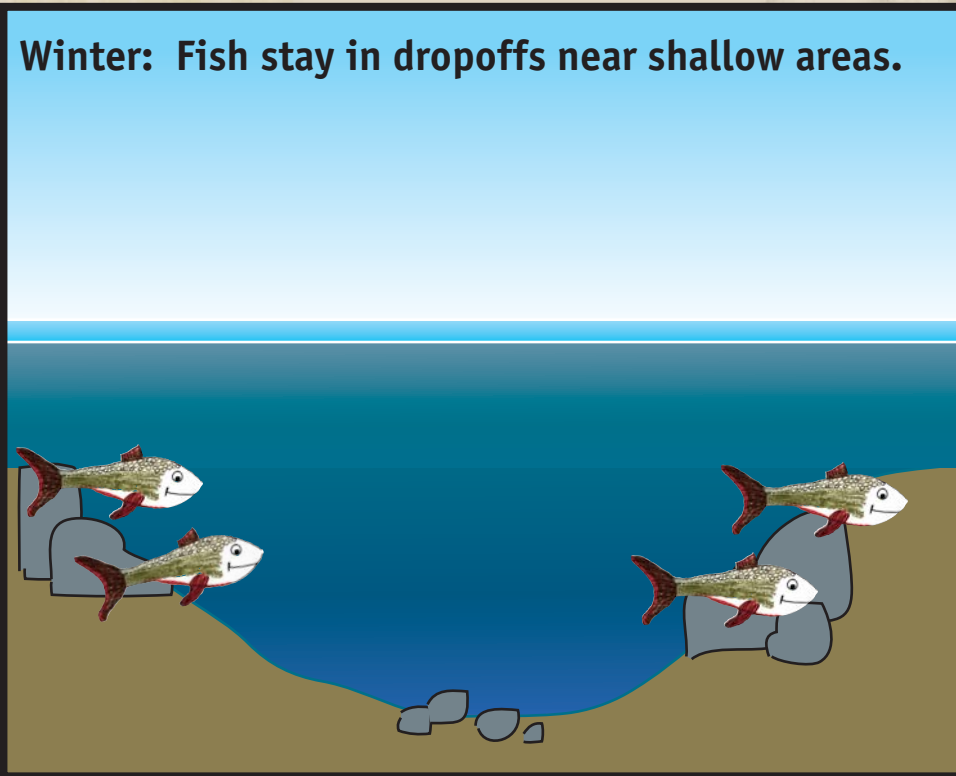


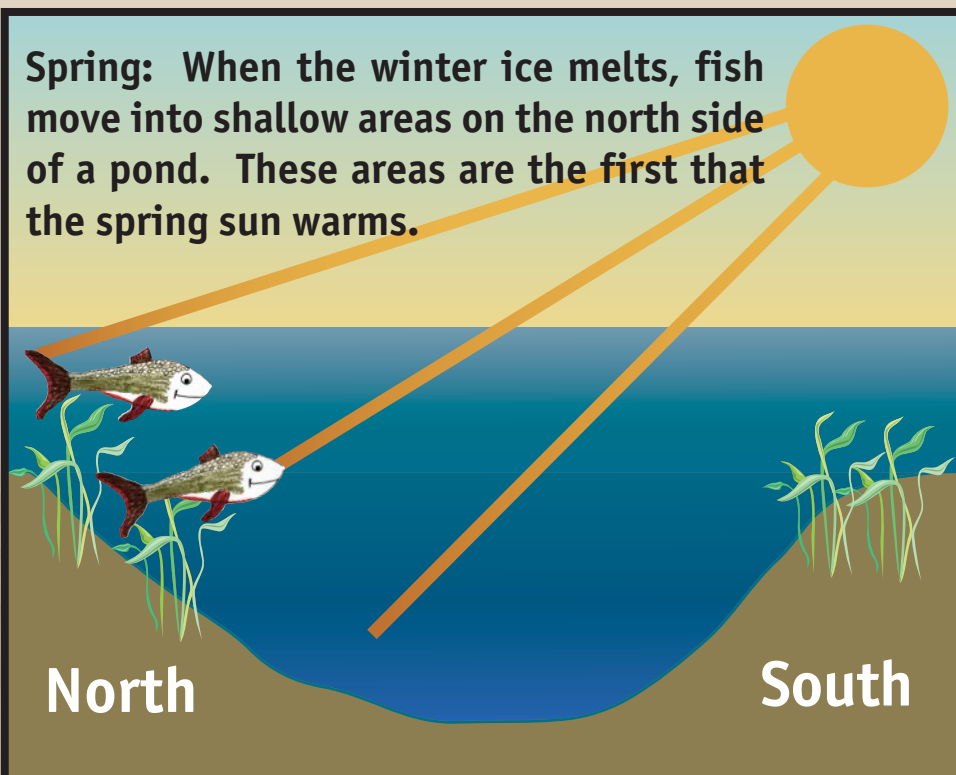
Seasons of a Pond

Catching fish is more than just casting. It is a game of hide and seek. The fish are hiding, and their secret places change with the seasons. One of the first things all anglers must learn is the “when’s and where’s” of fishing. “When” you are fishing can often tell you “where” fish are located and how to find them.

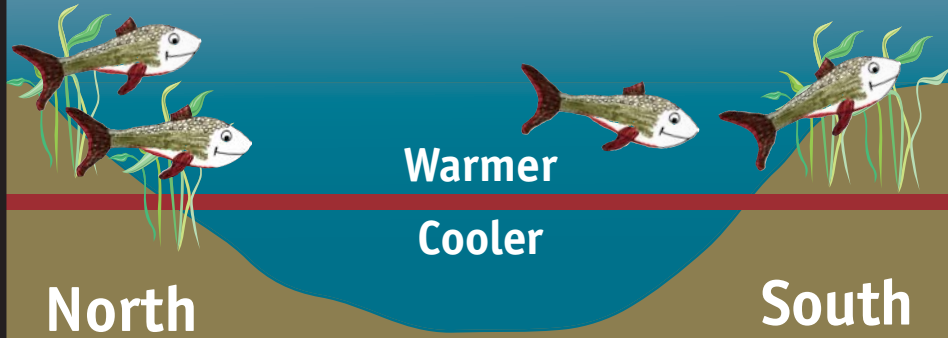
Winter: Fish stay in dropoffs near shallow areas.



Spring: When the winter ice melts, fish move into shallow areas on the north side of a pond. These areas are the first that the spring sun warms.



Summer: Fish like the shallow areas on the edge of deeper water.



Fall: As the shallow areas of a pond cool, the fish move out through the water. This movement makes it necessary to search for them. Using search baits and the fan technique will help you find fish.

Fan Technique:

