

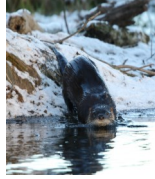
River Otter

Lontra canadensis

F: 3.25" H: 4" Activity: Diurnal/Nocturnal Family: Mustelidae



Size: 10-25 pounds
Diet: Carnivorous
Habitat: Unpolluted rivers, streams, lakes, and marshes



Cottontail Rabbit

Sylvilagus floridanus

F: 1.88" H: 3.25" Activity: Crepuscular Family: Leporidae



Size: 2-3 pounds
Diet: Herbivorous
Habitat: Swamps, thickets, briar patches, weedy fields, brush piles, overgrown fencerows and brushy gullies



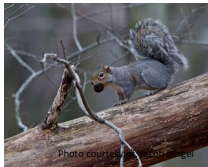
Gray Squirrel

Sciurus carolinensis

F: 1.88" H: 2.1" Activity: Diurnal Family: Sciuridae



Size: 1-1.5 pounds
Diet: Herbivorous
Habitat: Forests, suburban and urban areas



Track Patterns



Raccoon
Beaver
Striped Skunk
Porcupine
Black Bear
Opossum



Cottontail Rabbit
Gray Squirrel



White-tailed Deer
Elk
Coyote
Red Fox
Gray Fox



River Otter
Fisher
Mink

Wildlife leave signs behind indicating that they were in an area. In addition to tracks, animals may leave other signs behind to communicate with other animals, mark their territory, or from their natural behaviors.



Scat



Gnawings & Chews



Antler Rubs

Track sizes noted are the approximate maximum length for an adult animal.

PENNSYLVANIA GAME COMMISSION

State Headquarters

2001 Elmerton Avenue
Harrisburg, PA 17110-9797
717-787-4250
www.pgc.pa.gov



Region Offices

Northwest: 814-432-3187
Southwest: 724-238-9523
Northcentral: 570-398-4744
Southcentral: 814-643-1831
Northeast: 570-675-1143
Southeast: 610-926-3136



Cover photos: Jacob Dingel: Porcupine, white-tailed deer, raccoon, striped skunk, and beaver & Anthony Ross: Opossum, black bear, and elk



Common Pennsylvania Mammals Tracks



Elk

F: 4.5" H: 4.5"

Activity: Crepuscular Family: Cervidae

Cervus elaphus



Size: M: 600- 1000 pounds;
F: 500- 600 pounds
Diet: herbivorous
Habitat: Forest clearcuts, fields
revegetated strip mines, and
agricultural lands



Photo courtesy of Jacob Dingel

Bobcat

F: 2.5" H: 2.5"

Activity: Nocturnal Family: Felidae

Lynx rufus



Size: 18-24 pounds
Diet: Carnivorous
Habitat: Forested
mountains, swamps,
agricultural areas, and
suburban woodlots



Photo courtesy of Jacob Dingel

Striped Skunk

F: 2.19" H: 2"

Activity: Nocturnal Family: Mephitidae

Mephitis mephitis



Size: 3-12 pounds
Diet: Omnivorous
Habitat: Mixed woods,
brushland, rolling weedy
fields, fencerows, in or near
agricultural areas



Photo courtesy of Jacob Dingel

White-tailed Deer

Odocoileus virginianus

F: 3" H: 3.5"

Activity: Crepuscular Family: Cervidae



Size: 100-300 pounds
Diet: Herbivorous
Habitat: Brush staged forest, forest
and field edges, woodlots in farming
country, suburbs, and deep woods

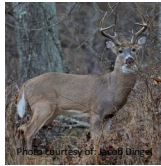


Photo courtesy of Jacob Dingel

Beaver

F: 3.88" H: 7"

Activity: Nocturnal Family: Castoridae

Castor canadensis



Size: 40-60 pounds
Diet: Herbivorous
Habitat: Streams, creeks,
rivers, on timbered
Marshland, and around
forest edged lakes



Photo courtesy of Jacob Dingel

Woodchuck

F: 2.75" H: 2.75"

Activity: Diurnal Family: Sciuridae

Marmota monax



Size: 5-12 pounds
Diet: Herbivorous
Habitat: Open fields,
meadows, pastures,
Fencerows, woodland
edges, and deep in the woods



Photo courtesy of Jacob Dingel

Eastern Coyote

F: 3.5" H: 3"

Activity: Nocturnal Family: Canidae

Canis latrans



Size: M: 45- 55 pounds;
F: 35- 40 pounds
Diet: Omnivore
Habitat: Forests,
croplands, and cities



Photo courtesy of Jacob Dingel

Raccoon

F: 3" H: 3.75"

Activity: Nocturnal Family: Procyonidae

Procyon lotor



Size: 10-30 pounds
Diet: Omnivorous
Habitat: forests,
swamps, marshes, and
meadows near ponds



Photo courtesy of Jacob Dingel

Porcupine

F: 3.38" H: 3.88"

Activity: Nocturnal Family: Erethizontidae

Erethizon dorsatum



Size: 9-15 pounds
Diet: Herbivorous
Habitat: Forests



Photo courtesy of Jacob Dingel

Red Fox

F: 2.88" H: 2.5"

Activity: Nocturnal Family: Canidae

Vulpes vulpes



Size: 8- 12 pounds
Diet: Omnivore
Habitat: Rolling farm
areas with wooded
tracts, marshes and
streams



Photo courtesy of Jacob Dingel

Opossum

F: 2.13" H: 2.75"

Activity: Nocturnal Family: Didelphidae

Didelphis virginiana



Size: 4-12 pounds
Diet: Omnivorous
Habitat: Farmland,
woodlots, reverting fields,
brushy woods, and open
woods

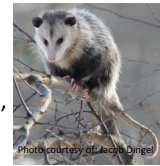


Photo courtesy of Jacob Dingel

Muskrat

F: 1.5" H: 2.75"

Activity: Nocturnal Family: Cricetidae

Ondatra zibethicus



Size: 2-3 pounds
Diet: Herbivorous
Habitat: Still or slow moving
waters of ponds, marshes,
streams, and rivers; and to a
lesser extent, faster streams



Photo courtesy of Jacob Dingel

Gray Fox

F: 2" H: 1.75"

Activity: Nocturnal Family: Canidae

Urocyon cinereoargenteus



Size: 7- 13 pounds
Diet: Omnivore
Habitat: Brushy areas,
swampy lands and
rugged, mountainous
terrain



Photo courtesy of Jacob Dingel

Black Bear

F: 6.25" H: 7.75"

Activity: Crepuscular Family: Ursidae

Ursus americanus



Size: 140-400
pounds
Diet: Omnivorous
Habitat: Forests



Photo courtesy of Jacob Dingel

Mink

F: 2" H: 1.88"

Activity: Nocturnal Family: Mustelidae

Neovison vison



Size: 1.5-2 pounds
Diet: Carnivorous
Habitat: Edges of
lakes, streams, and
rivers



Photo courtesy of Jacob Dingel